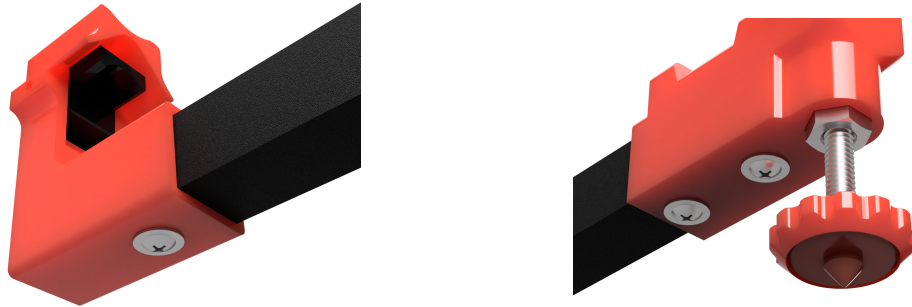
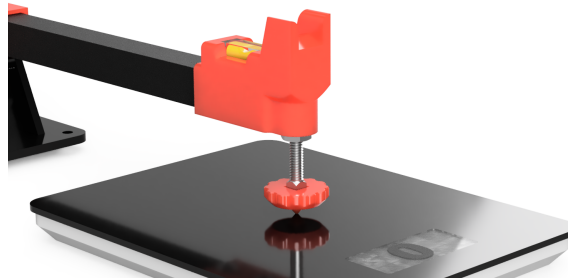


SwingW.com - Simple Swingweight System XL V2

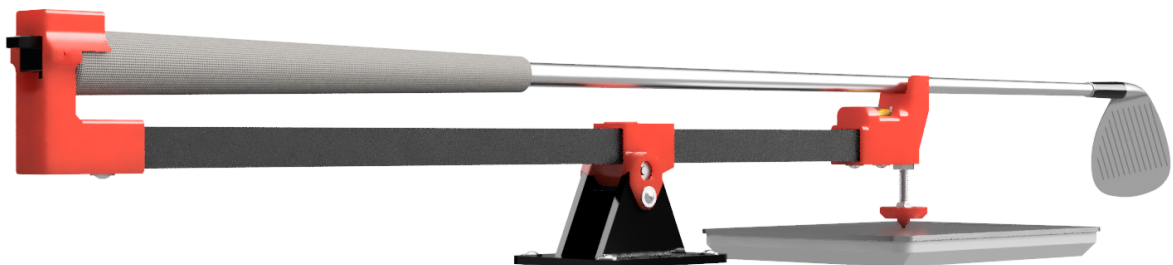
1. To reduce potential shipping damage, the Shaft and Butt supports are shipped unassembled. Use the 3 screws provided to attach the shaft and butt support assemblies as shown below. **DO NOT OVER TIGHTEN THE SCREWS.**



2. Clamp or screw the fixture to a rigid horizontal surface. The fixture **MUST** be secured to get accurate readings and prevent the club from tipping over.
3. Set a quality digital gram scale under the adjustable foot. Use the adjustable foot and built-in bubble level to “rough” level the arm. **POOR QUALITY SCALES WILL GIVE POOR RESULTS.**
4. Tare the scale to “ZERO” grams with the fixture resting on the center of the scale (without a club). **DO NOT OMIT THIS STEP.**



5. Set the club in the fixture. The grip end of the club is supported by the butt end fixture as shown below. **Make sure the end of the grip is tight against the vertical surface of the butt end support.** If you are measuring a club without a grip installed, refer to the instructions later in this document.
6. The entire club weight must be in the fixture. You may need to let the face of the club overhang the edge of the horizontal surface.

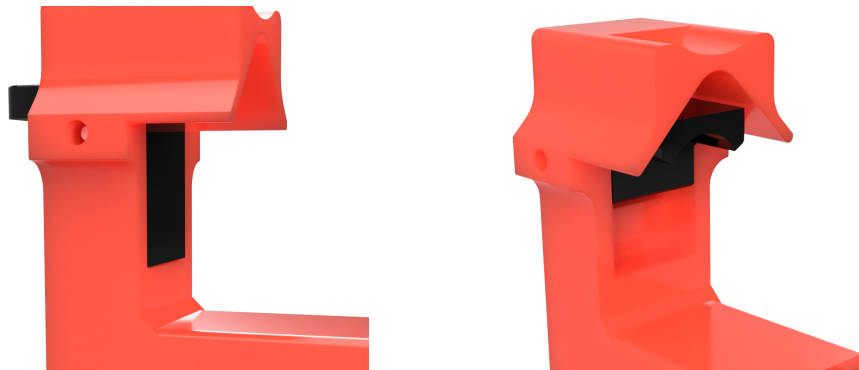


7. Check the fixture for level one last time and adjust if needed. Read the grams on the scale.
8. Use the chart below to equate the measured grams to a swingweight reading. For example, 605 grams is equal to “D0” swingweight. If your gram reading falls in between readings on this chart, use the swingweight which is closest to your reading. Every 5 grams is equal to 1 swingweight.

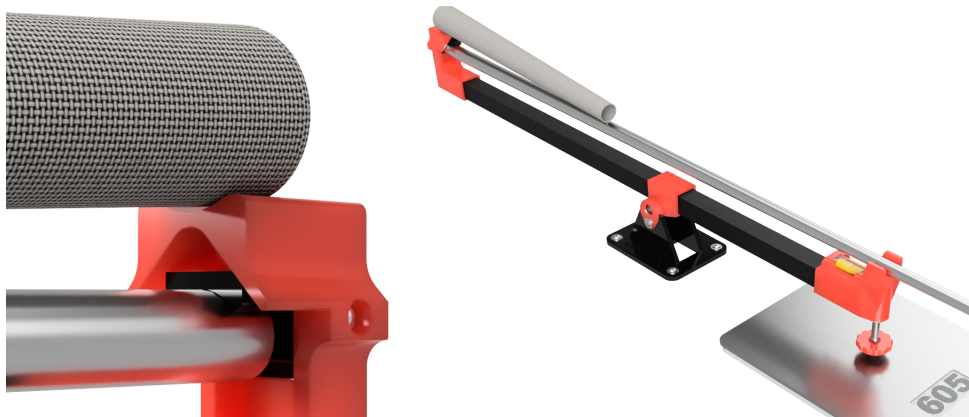
SWINGWEIGHTS BASED ON GRAMS MEASURED													
A		B		C		D		E		F		G	
455	0	505	0	555	0	605	0	655	0	705	0	755	0
460	1	510	1	560	1	610	1	660	1	710	1	760	1
465	2	515	2	565	2	615	2	665	2	715	2	765	2
470	3	520	3	570	3	620	3	670	3	720	3	770	3
475	4	525	4	575	4	625	4	675	4	725	4	775	4
480	5	530	5	580	5	630	5	680	5	730	5	780	5
485	6	535	6	585	6	635	6	685	6	735	6	785	6
490	7	540	7	590	7	640	7	690	7	740	7	790	7
495	8	545	8	595	8	645	8	695	8	745	8	795	8
500	9	550	9	600	9	650	9	700	9	750	9	800	9

Measuring prior to grip installation

To set the fixture to “gripless” measurements, press the lever on the butt support to rotate the gripless adapter into position. See the illustration below.



1. Follow all of the previous instructions and place the “dry fit” club in the fixture. The gripless adapter will support the end of the raw shaft and has a built-in spacer to simulate the thickness of a grip cap.
2. Set the grip on top of the fixture to simulate the installed weight as shown below. Use the chart as shown above to estimate the final assembled club swingweight.



3. Once assembled, double check the final club swingweight following the instructions above.